

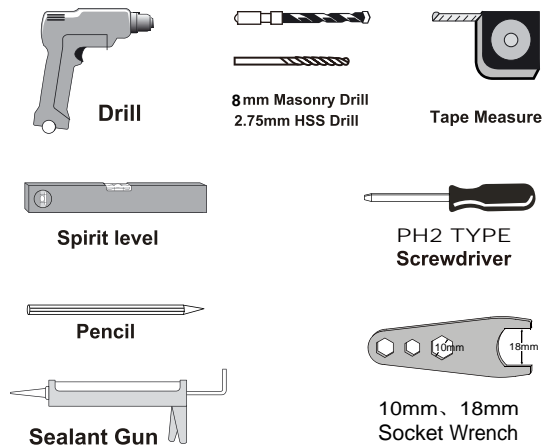
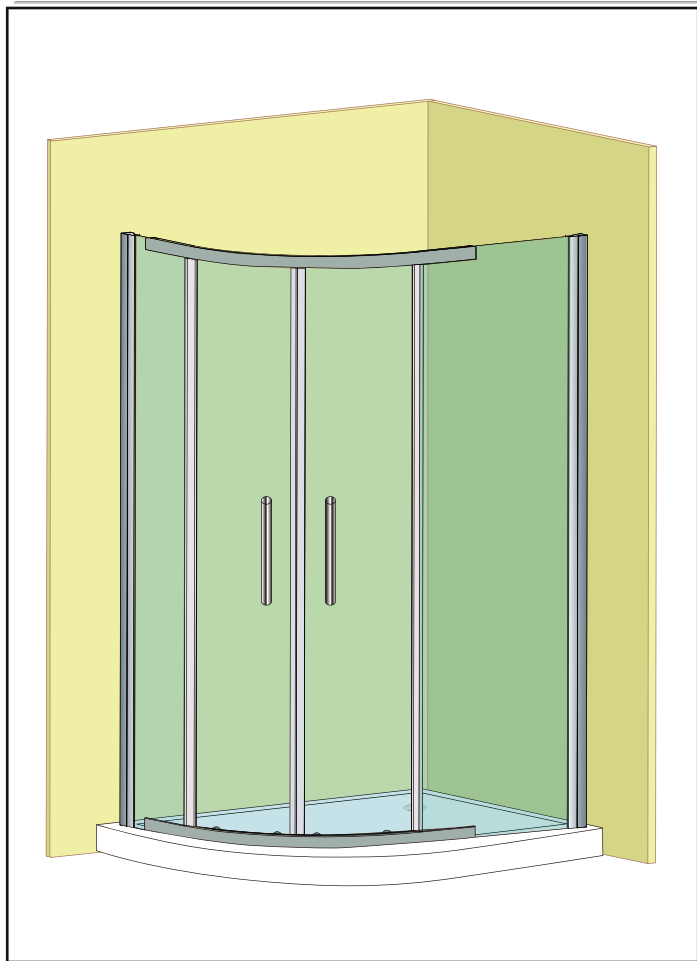
# Double Door Quadrant

**IMPORTANT**

Manual for product codes:-

- |        |        |        |        |
|--------|--------|--------|--------|
| AQ5101 | AQ5102 | AQ5103 |        |
| AQ5104 | AQ5105 | AQ5106 | AQ5107 |

**Tools Required**



Please note hand tools **NOT** supplied.

**Parts List**

Item	Description	Qty
1..	Wall channel	2
2..	Cover strip	2
3..	Cover cap	4
4..	Fixed Panel	2
5..	Moving Door	2
6..	Horizontal rail	2
7..	Upright Seal(long 2 short 2)	4
8..	Rail Cap	4
9..	One Side Seal	4
10..	Wall plug	6
11..	ST4*45 screw	6
12..	ST3.5*10 screw	6
13..	M6*20 screw	8
14..	Magnetic seal	2
15..	Handle	2

**Before you start carefully read the assembly instructions.**

These instructions assume that installation is done against solid/tiled walls.

The wall plugs supplied with the installation kit are for use on solid walls. Hollow or stud -partition walls will require alternative fixings. Please consult with a reputable trades person or hardware supplier for the correct type of fixing.

It may also be necessary to consult your tiling supplier about the correct method for drilling your tiles.

Please check this product for damage prior to starting the installation. No claims can be made after the product has been fitted. This is a 2 person installation. Please note the minimum and maximum adjustment for this product are based on perfectly plumb walls.

**USE SAFETY EYE-WEAR WHEN DRILLING**

# Assemble the outer frame

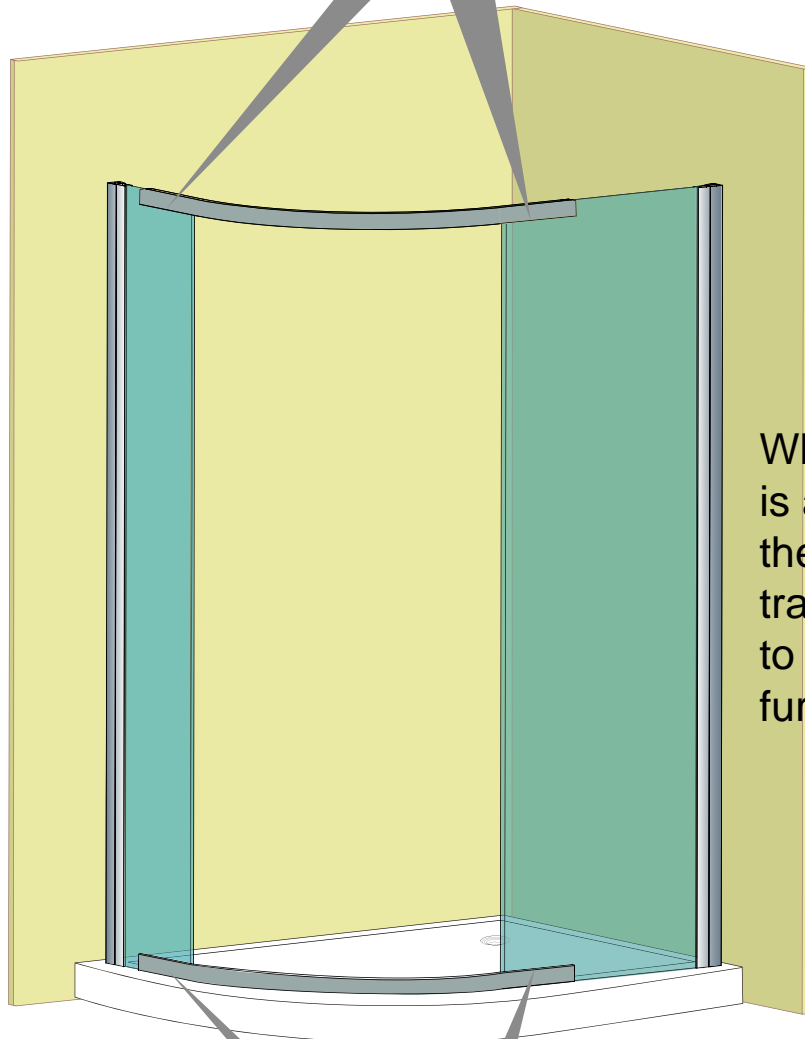
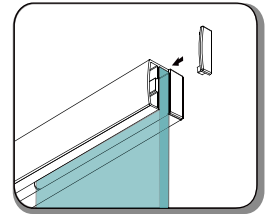
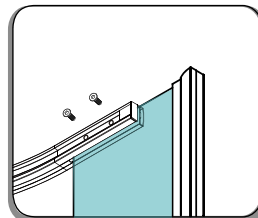
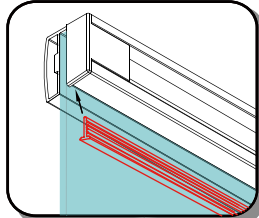
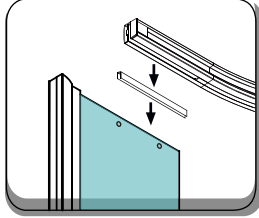
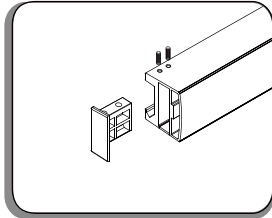
Assemble inner end caps, these may already be installed for you.

Slot the rail onto the glass

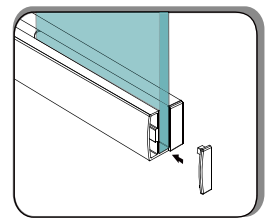
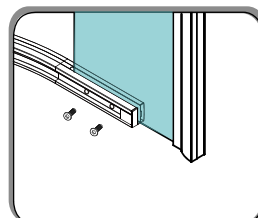
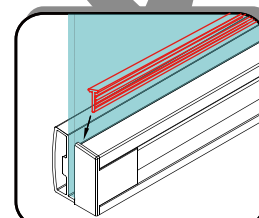
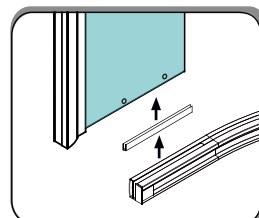
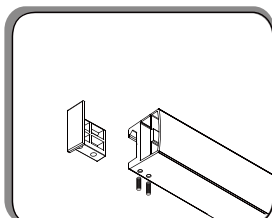
Insert gasket into gap.

Fix with M6\*20 screws.

Fix outer end cap.

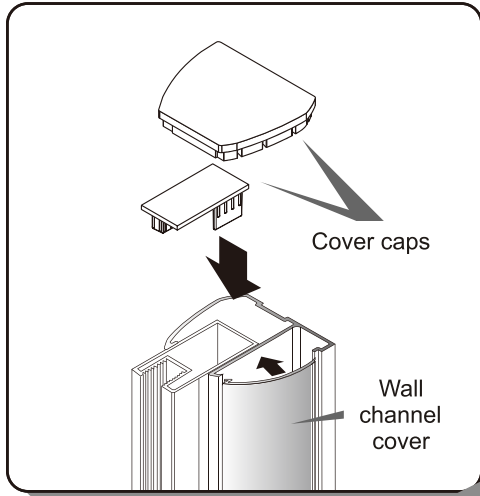


When the frame is assembled, lift the frame onto the tray and then refer to the next page for further instructions.

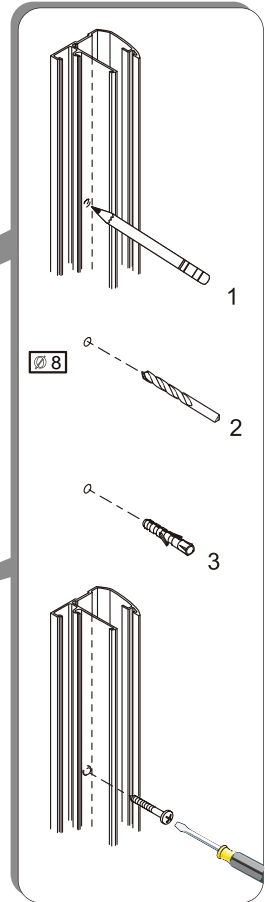


# Fix frame in place

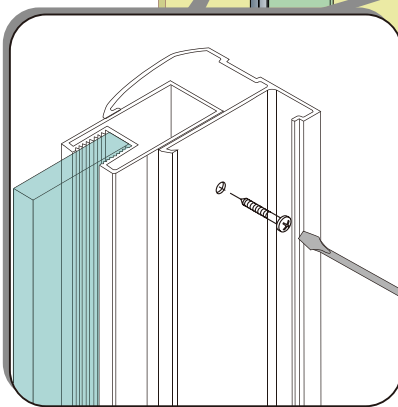
Lastly clip the cover caps and wall channel cover profile to the wall channel as shown.



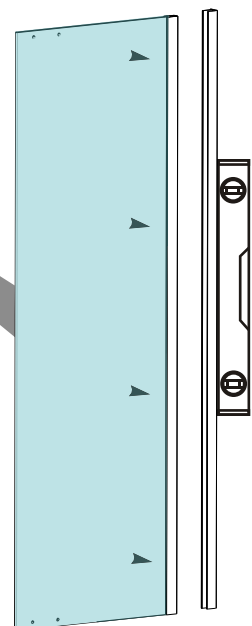
Using a pencil mark out the position of the wall channel on the wall. Make sure the wall channel is plumb by using a spirit level as shown. Carefully drill the holes for the fixings using a 6mm masonry drill bit.



Using a screwdriver fix the wall channel to the wall taking care not to over tighten the fixings.



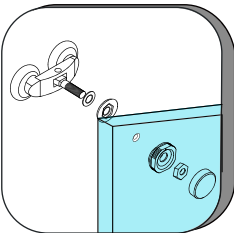
Gently offer the vertical frame section into the wall channel and fix to the required position. This is done by drilling through the pre-drilled wall channel using a 2.75mm HSS drill bit. Using a screwdriver and the fixings provided fix the vertical frame section to the wall channel as shown above.



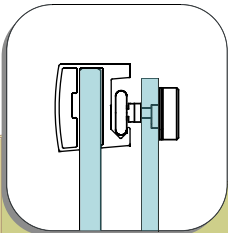
# Hang the doors

When the frame is fixed in place the door can be hung and adjusted.

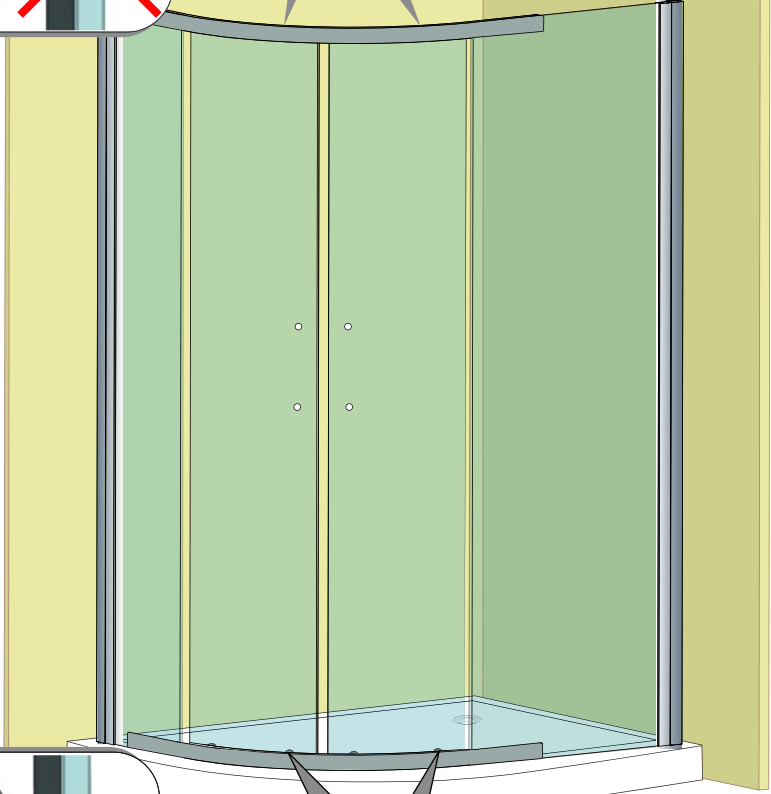
Right position of the bracket



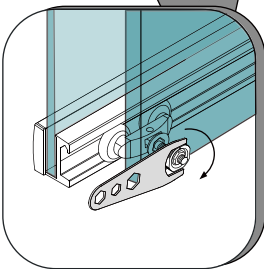
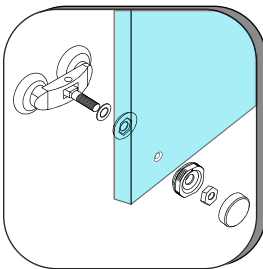
Place the top rollers into the running track.



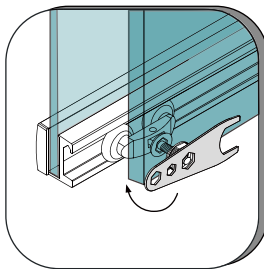
The bottom runners will need to be loosened or taken off the door to fit. This is an ideal time to familiarize yourself with the adjustment system in the wheel.



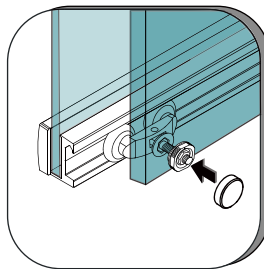
Right position of the bracket



adjust the roller up or down by rotating the grey plastic nut.



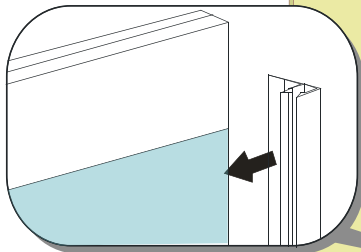
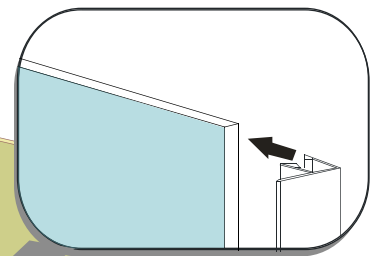
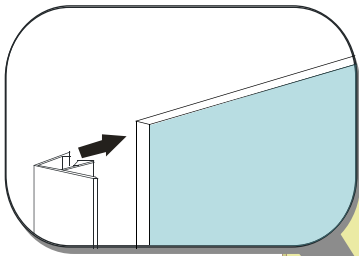
the smaller metal nut must then be tightened to stop the roller from moving from its place.



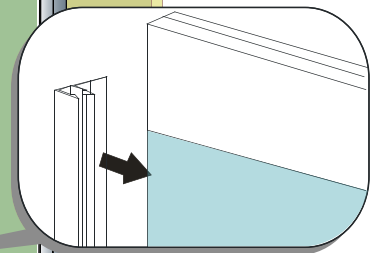
# Finish the installation

Attach the long seal to the back of the moving door.

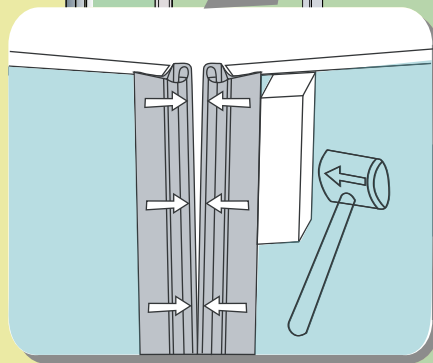
Attach the long seal to the back of the moving door.

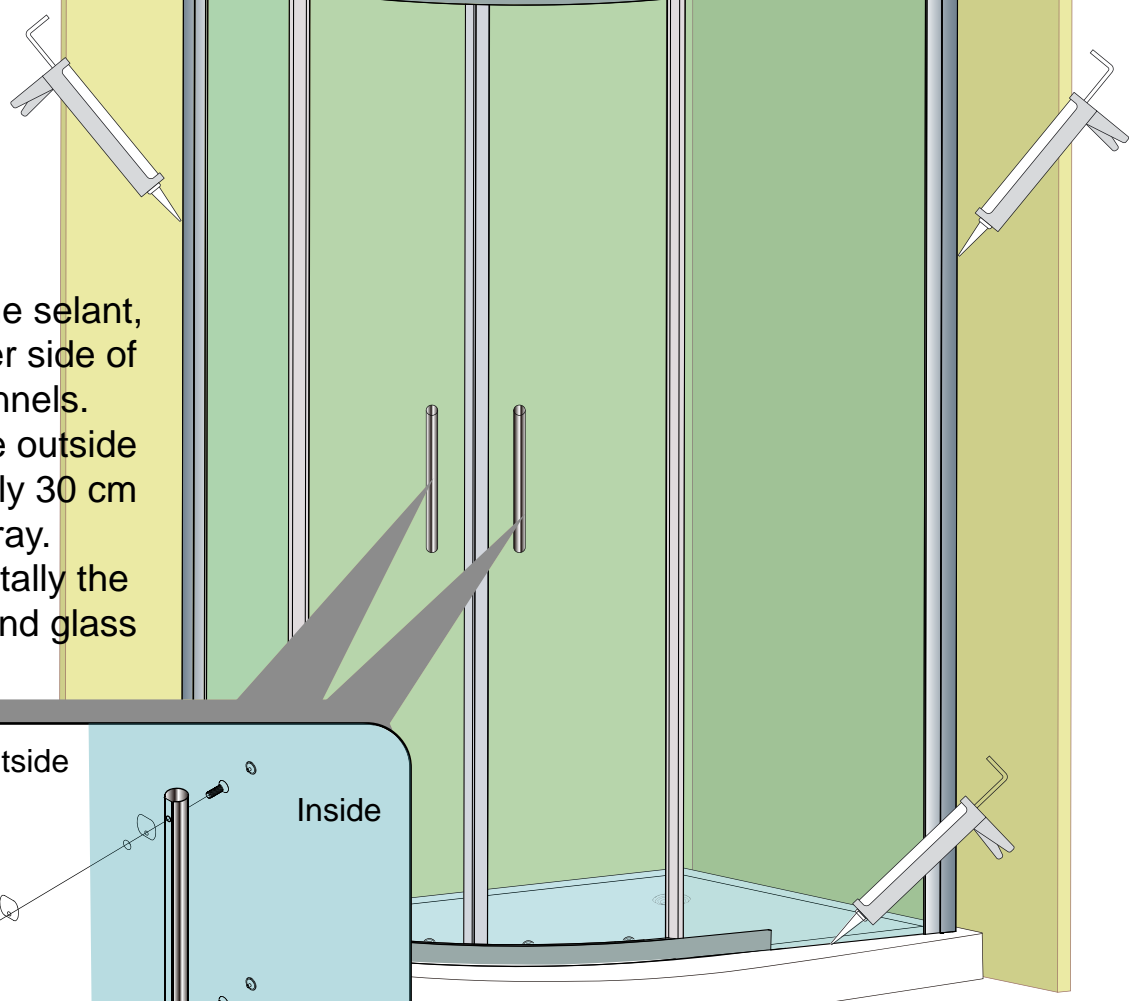
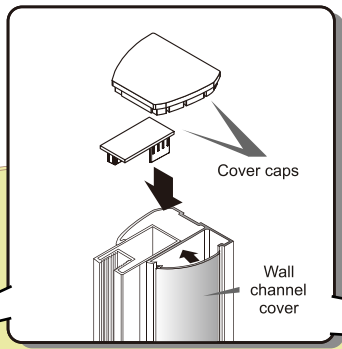


Attach a short seal to the fixed panel.

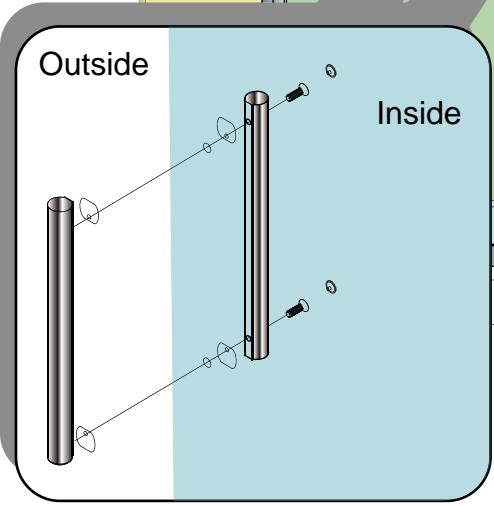


Attach a short seal to the fixed panel.





Using silicone sealant, seal the inner side of the wall channels. Also seal the outside approximately 30 cm of from the tray. Seal horizontally the bottom rail and glass to the tray.



**24 HRS**



**DO NOT USE THE ENCLOSURE FOR 24 HOURS AFTER SEALING**