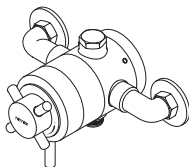
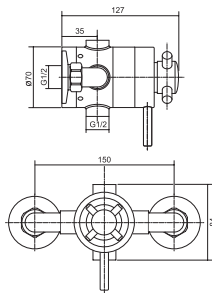
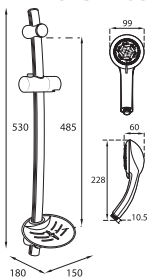


# Unichrome Mersey Exposed

## thermostatic mixer shower



|                                |                           |
|--------------------------------|---------------------------|
| Temperature Control            | Thermostatic              |
| Plumbing System Compatibility  | Low and high pressure     |
| Inlet Connections              | 15mm compression          |
| Water Entry Points             | Rising, falling, back     |
| Outlet Connection              | Bottom 1/2" BSP           |
| Minimum Running Pressure/Flow  | 0.1Bar @ 8l/min           |
| Maximum Running Pressure       | 5 Bar                     |
| Maximum Static Pressure        | 10 Bar                    |
| Open Outlet Flowrate at 0.1Bar | 5l/min                    |
| Flow Limiters Supplied         | 12l/min max flow          |
| Approvals                      | Complies BS-En 1111, 1287 |
| Guarantee                      | 5 years                   |

### Operating Features

- Thermostatic to within 2°C
- Automatic shutdown if hot or cold supply fails
- Separate flow and temperature controls
- Rub clean showerhead – 5 spray patterns

| Finish | Code     |
|--------|----------|
| Chrome | UNMEEXCM |